

TOURIST ACCOMMODATION, TASMANIA, JUNE QUARTER 1994

MAIN FEATURES

JUNE QUARTER 1994
COMPARED WITH
JUNE QUARTER 1993

HOTELS, MOTELS AND GUEST HOUSES

- Rooms available increased by 1.2 per cent to 5,322 while room nights occupied increased by 14.7 per cent from 215,976 to 247,740.
- The room occupancy rate rose from 45.1 per cent to 51.2 per cent.
- Guest nights increased by 10.0 per cent to 416,239 and the bed occupancy rate increased from 26.7 per cent to 29.4 per cent.
- Guest arrivals at hotels, motels and guest houses increased by 14.9 per cent to 230,767 while average length of stay decreased from 1.9 to 1.8 days.
- Takings from accommodation increased by 17.3 per cent to \$17.8m. Average takings per room night occupied increased from \$70 to \$72.

HOLIDAY FLATS, UNITS AND HOUSES

- The number of units, etc. available for short-term letting increased by 7.9 per cent to 793 while unit nights occupied increased by 16.6 per cent to 35,926.
- The unit occupancy rate increased from 46.1 per cent to 49.8 per cent.
- Unit lettings increased by 16.8 per cent and average length of stay was unchanged at 2.1 days.
- Accommodation takings increased by 23.2 per cent to \$2.5m. Average takings per unit night occupied increased from \$65 to \$68.

CARAVAN PARKS (SHORT-TERM AND LONG-TERM)

- Capacity available increased by 5.7 per cent to 6,708 sites and cabins, etc. while site nights occupied increased by 4.4 per cent from 164,492 to 171,758.
- The site occupancy rate decreased by 0.4 percentage points to 28.1 per cent.
- Of the total June quarter 1994 capacity available, 407 sites, etc. (6.1 per cent) were occupied by long-term residents, 956 sites (14.3 per cent) were permanently reserved but only casually occupied by their tenants and an average of 524 sites (7.8 per cent) were occupied by other short-term guests.
- Accommodation takings increased by 9.5 per cent from \$1.3m to \$1.4m.

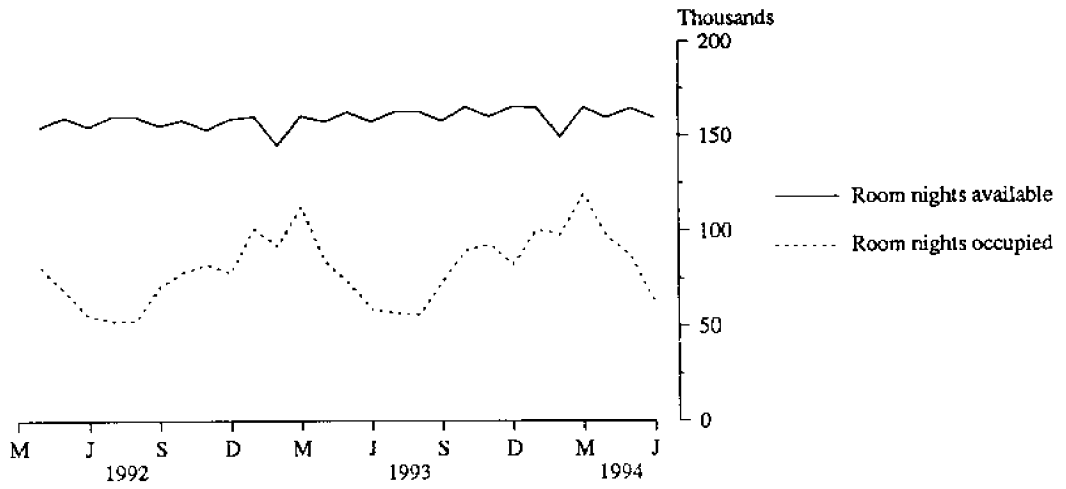
VISITOR HOSTELS

- Bed spaces available decreased by 1.7 per cent from 1,475 to 1,450.
- Guest nights sold increased by 3.0 per cent from 14,668 to 15,114 and the bed occupancy rate increased from 10.9 per cent to 11.5 per cent.
- Guest arrivals decreased from 10,425 to 9,441 while average length of stay increased from 1.4 days to 1.6 days.
- Accommodation takings increased by 5.4 per cent to \$0.18m while average takings per guest night increased from \$11 to \$12.

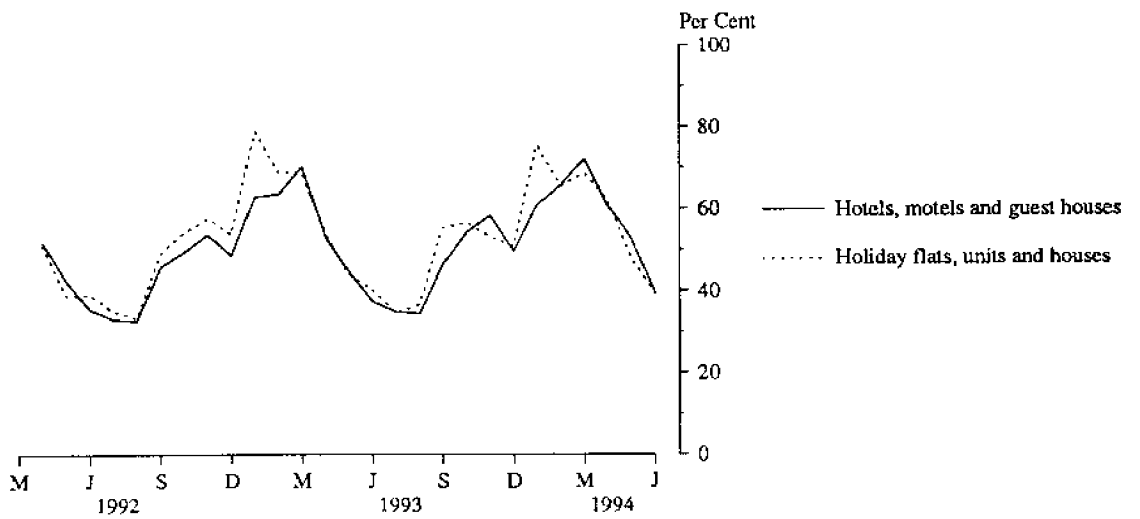
INQUIRIES

- *For inquiries concerning these statistics and the availability of related unpublished statistics, contact Sally Barrett on Brisbane 008 077285 or any ABS office.*
- *For other inquiries including copies of publications, telephone the Information Officer on Hobart (002) 20 5800.*
- *The Tasmanian Office of the Bureau is located on the first floor, 175 Collins Street, Hobart (GPO Box 66A, Hobart 7001).*

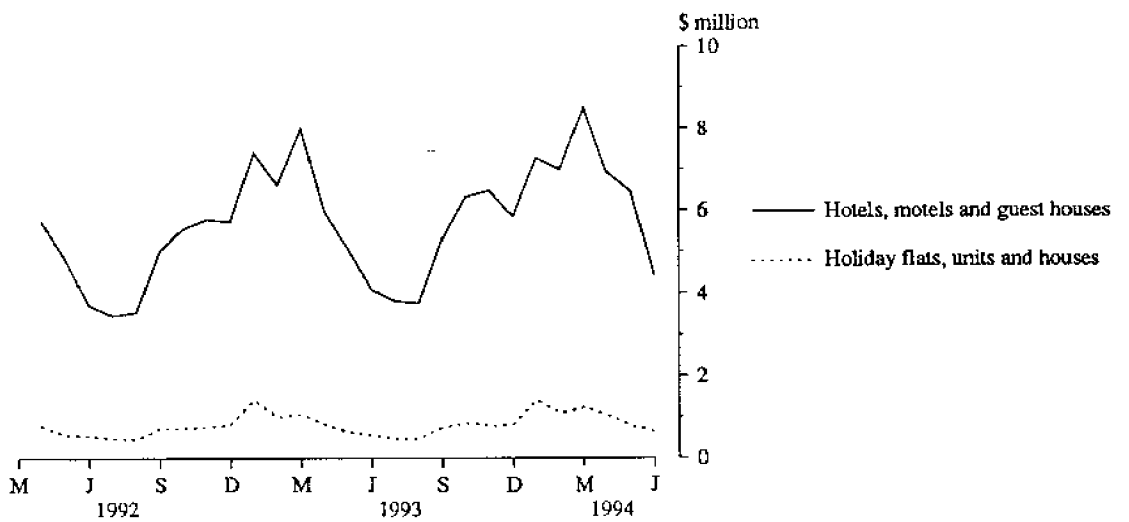
**MONTHLY ROOM NIGHTS AVAILABLE AND OCCUPIED:
HOTELS, MOTELS AND GUEST HOUSES,
TASMANIA**



**MONTHLY OCCUPANCY RATES,
TASMANIA**



**MONTHLY TAKINGS FROM ACCOMMODATION,
TASMANIA**



CONTENTS

<i>Table</i>		<i>Page</i>
..	Main features	1
..	Diagrams	2
1	Summary of hotels, motels and guest houses with facilities, Tasmania	4
2	Summary of caravan parks, Tasmania	5
3	Summary of holiday flats, units and houses, Tasmania	6
4	Summary of visitor hostels, Tasmania	6
5	Room nights, unit nights and site nights occupied: Seasonally adjusted and trend estimates, Tasmania	7
6	Hotels, motels and guest houses with facilities by star grading, Tasmania	8
7	Hotels, motels and guest houses with facilities by establishment size, Tasmania	9
8	Hotels, motels and guest houses with facilities by statistical division, Tasmania	10
9	Hotels, motels and guest houses with facilities: Statistical divisions and selected statistical local areas, Tasmania	12
..	Diagrams: Monthly room/unit occupancy rates	14
10	Holiday flats, units and houses by statistical division and selected statistical areas, Tasmania	16
11	Caravan parks by statistical division and selected statistical areas, Tasmania	17
12	Visitor hostels by statistical division, Tasmania	18
13	Passenger arrivals and departures, Tasmania, interstate and international	19
14	Total passenger arrivals by air and sea into Tasmania: Seasonally adjusted and trend estimates	20
..	Changes to geographic boundaries, Tasmania (Effective 1 July 1993)	21
..	Explanatory Notes	22

TABLE 1 — SUMMARY OF HOTELS, MOTELS AND GUEST HOUSES WITH FACILITIES, TASMANIA (a)

Particulars	Unit	Quarter ended				Year ended			
		March 1993	June 1993	September 1993	December 1993	March 1994	June 1994	June 1993	June 1994
LICENSED HOTELS WITH FACILITIES									
Establishments	No.	90	92	92	93	92	91
Guest rooms	No.	3,423	3,421	3,410	3,510	3,489	3,488
Bed spaces	No.	9,812	9,827	9,831	10,044	9,993	9,961
Employment (persons)	No.	3,591	3,387	3,370	3,410	3,587	3,468
Room nights occupied	No.	200,642	143,539	127,968	175,628	205,931	163,803	627,000	673,330
Room occupancy rate	per cent	65.2	46.1	40.8	54.4	65.6	51.6	50.1	53.1
Guest nights	No.	361,362	243,567	209,261	290,835	370,707	263,797	1,070,105	1,134,600
Bed occupancy rate	per cent	41.0	27.2	23.1	31.5	41.2	29.1	29.9	31.2
Guest arrivals	No.	183,258	125,395	106,744	158,903	201,600	143,788	545,833	611,035
Average length of stay	days	2.0	1.9	2.0	1.8	1.8	1.8	2.0	1.9
Takings from accommodation	\$'000	15,535	10,811	9,500	13,366	15,769	12,660	47,548	51,296
MOTELS AND GUEST HOUSES WITH FACILITIES									
Establishments	No.	90	98	98	86	86	86
Guest rooms	No.	1,760	1,837	1,856	1,832	1,845	1,834
Bed spaces	No.	5,484	5,731	5,721	5,625	5,665	5,617
Employment (persons)	No.	694	685	712	774	754	751
Room nights occupied	No.	105,383	72,437	58,271	89,793	112,094	83,937	309,906	344,095
Room occupancy rate	per cent	66.5	43.4	34.3	53.3	67.5	50.4	48.4	51.3
Guest nights	No.	203,059	134,815	102,277	159,561	219,215	152,442	572,976	633,495
Bed occupancy rate	per cent	41.1	25.9	19.5	30.8	43.0	29.9	28.7	30.7
Guest arrivals	No.	112,308	75,402	58,770	90,835	121,933	86,979	318,431	358,517
Average length of stay	days	1.8	1.8	1.7	1.8	1.8	1.8	1.8	1.8
Takings from accommodation	\$'000	6,532	4,361	3,377	5,294	7,044	5,139	18,789	20,854
TOTAL HOTELS, MOTELS AND GUEST HOUSES WITH FACILITIES									
Establishments	No.	180	190	190	179	178	177
Guest rooms	No.	5,183	5,258	5,266	5,342	5,334	5,322
Bed spaces	No.	15,296	15,558	15,552	15,669	15,658	15,578
Employment (persons)	No.	4,285	4,072	4,082	4,184	4,341	4,219
Room nights occupied	No.	306,025	215,976	186,239	265,421	318,025	247,740	936,906	1,017,425
Room occupancy rate	per cent	65.6	45.1	38.5	54.0	66.2	51.2	49.5	52.5
Guest nights	No.	564,421	378,382	311,538	450,396	589,922	416,239	1,643,081	1,768,095
Bed occupancy rate	per cent	41.0	26.7	21.8	31.2	41.9	29.4	29.4	31.0
Guest arrivals	No.	295,566	200,797	165,514	249,738	323,533	230,767	864,264	969,552
Average length of stay	days	1.9	1.9	1.9	1.8	1.8	1.8	1.9	1.8
Takings from accommodation	\$'000	22,068	15,172	12,878	18,661	22,812	17,799	66,337	72,149

(a) From December quarter 1993, establishments with fewer than 5 rooms have been formally excluded from the scope of this collection. See Explanatory Note 2 (page 22).

TABLE 2 — SUMMARY OF CARAVAN PARKS, TASMANIA

Particulars	Unit	Quarter ended				Year ended			
		March 1993	June 1993	September 1993	December 1993	March 1994	June 1994	June 1993	June 1994
SHORT-TERM CARAVAN PARKS									
Establishments	No.	57	57	54	56	58	58
Capacity									
On-site vans	No.	289	277	255	274	284	284
Other powered sites	No.	2,846	2,876	2,678	2,782	2,943	2,977
Unpowered sites	No.	2,152	2,104	2,021	2,083	2,197	2,201
Cabins, etc.	No.	316	321	257	306	315	319
Total capacity	No.	5,603	5,578	5,211	5,445	5,739	5,781
Sites occupied by long-term guests	No.	270	241	168	210	212	229
Other sites permanently reserved	No.	806	817	881	875	858	944
Employment (persons)	No.	193	174	155	183	184	175
Site nights occupied	No.	193,813	141,666	120,509	148,173	186,782	147,146	592,351	602,610
Site occupancy rate	per cent	38.4	27.9	25.1	29.6	36.2	28.0	28.9	29.8
Takings from accommodation	\$'000	2,127	1,050	646	1,174	2,120	1,091	5,070	5,031
LONG-TERM CARAVAN PARKS									
Establishments	No.	10	10	13	12	12	12
Capacity									
On-site vans	No.	107	105	136	120	120	117
Other powered sites	No.	411	412	607	524	519	489
Unpowered sites	No.	191	191	286	240	240	225
Cabins, etc.	No.	59	59	126	96	97	96
Total capacity	No.	768	767	1,155	980	976	927
Sites occupied by long-term guests	No.	158	136	217	195	190	178
Other sites permanently reserved	No.	49	55	17	17	16	12
Employment (persons)	No.	31	28	43	41	43	44
Site nights occupied	No.	29,942	22,826	28,434	29,516	33,447	24,612	104,424	116,009
Site occupancy rate	per cent	43.3	32.7	26.8	32.7	38.1	29.2	37.5	31.5
Takings from accommodation	\$'000	372	261	350	415	475	344	1,075	1,584
TOTAL CARAVAN PARKS									
Establishments	No.	67	67	67	68	70	70
Capacity									
On-site vans	No.	396	382	391	394	404	401
Other powered sites	No.	3,257	3,288	3,285	3,306	3,462	3,466
Unpowered sites	No.	2,343	2,295	2,307	2,323	2,437	2,426
Cabins, etc.	No.	375	380	383	402	412	415
Total capacity	No.	6,371	6,345	6,366	6,425	6,715	6,708
Sites occupied by long-term guests	No.	428	377	385	405	402	407
Other sites permanently reserved	No.	855	872	898	892	874	956
Employment (persons)	No.	224	202	198	224	227	219
Site nights occupied	No.	223,755	164,492	148,943	177,689	220,229	171,758	696,775	718,619
Site occupancy rate	per cent	39.0	28.5	25.4	30.1	36.4	28.1	29.9	30.0
Takings from accommodation	\$'000	2,499	1,311	996	1,589	2,595	1,435	6,145	6,615

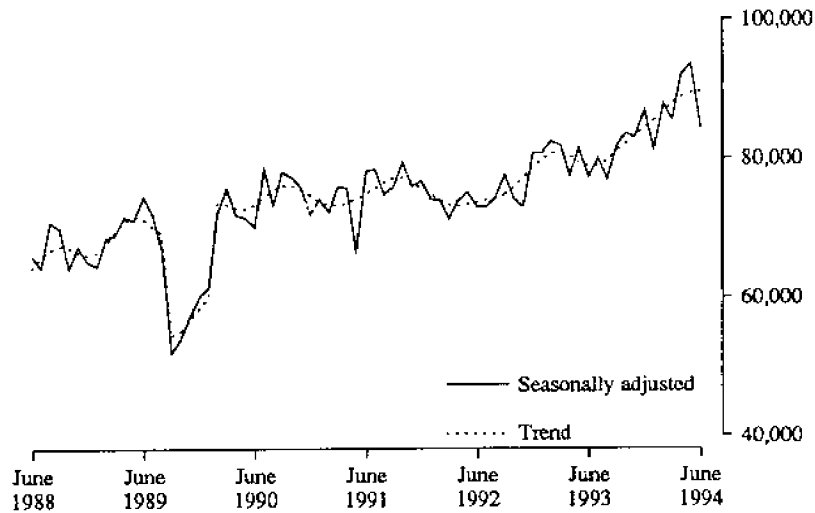
TABLE 3 — SUMMARY OF HOLIDAY FLATS, UNITS AND HOUSES, TASMANIA

<i>Particulars</i>	<i>Unit</i>	<i>Quarter ended</i>				<i>Year ended</i>			
		<i>March 1993</i>	<i>June 1993</i>	<i>September 1993</i>	<i>December 1993</i>	<i>March 1994</i>	<i>June 1994</i>	<i>June 1993</i>	<i>June 1994</i>
Letting entities	No.	45	45	45	50	53	52
Flats, units and houses									
Single bedroom	No.	228	227	225	257	265	260
Multiple bedroom	No.	502	508	501	514	532	533
<i>Total flats, units and houses</i>	<i>No.</i>	<i>730</i>	<i>735</i>	<i>726</i>	<i>771</i>	<i>797</i>	<i>793</i>	<i>..</i>	<i>..</i>
Bed spaces	No.	3,258	3,247	3,189	3,366	3,511	3,486
Employment (persons)	No.	304	290	283	325	338	313
Unit nights occupied	No.	47,515	30,816	28,080	37,956	50,280	35,926	141,422	152,242
Unit occupancy rate	per cent	72.3	46.1	42.0	53.5	70.1	49.8	53.0	54.1
Unit lettings	No.	21,947	14,493	12,252	18,137	23,307	16,928	65,268	70,624
Average length of stay	days	2.2	2.1	2.3	2.1	2.2	2.1	2.2	2.2
Takings from accommodation	\$'000	3,471	1,992	1,694	2,450	3,725	2,455	9,419	10,324

TABLE 4 — SUMMARY OF VISITOR HOSTELS, TASMANIA

<i>Particulars</i>	<i>Unit</i>	<i>Quarter ended</i>				<i>Year ended</i>			
		<i>March 1993</i>	<i>June 1993</i>	<i>September 1993</i>	<i>December 1993</i>	<i>March 1994</i>	<i>June 1994</i>	<i>June 1993</i>	<i>June 1994</i>
Establishments	No.	39	39	38	38	39	36
Bed spaces	No.	1,458	1,475	1,430	1,471	1,487	1,450
Employment (persons)	No.	92	94	77	94	108	90
Guest nights	No.	33,227	14,668	8,286	18,937	35,706	15,114	71,706	78,043
Bed occupancy rate	per cent	25.3	10.9	6.5	14.0	26.7	11.5	14.3	14.7
Guest arrivals	No.	24,594	10,425	5,454	13,418	24,992	9,441	52,624	53,305
Average length of stay	days	1.4	1.4	1.5	1.4	1.4	1.6	1.4	1.5
Takings from accommodation	\$'000	389	166	87	215	406	175	824	884

HOTEL/MOTEL ROOM NIGHTS



HOLIDAY UNIT NIGHTS

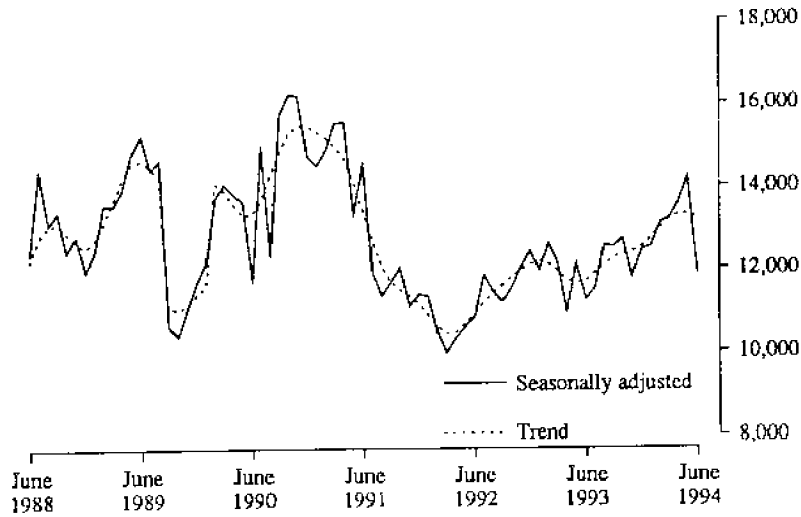


TABLE 5. HOTEL & MOTEL ETC. ROOM NIGHTS, HOLIDAY UNIT NIGHTS AND CARAVAN PARK SITE NIGHTS: SEASONALLY ADJUSTED AND TREND ESTIMATES

		<i>Hotel, motel etc. with facilities, room nights</i>		<i>Holiday unit nights</i>		<i>Caravan park site nights</i>	
		<i>Seasonally adjusted</i>	<i>Trend</i>	<i>Seasonally adjusted</i>	<i>Trend</i>	<i>Seasonally adjusted</i>	<i>Trend</i>
1992	July	73,107	74,114	11,839	11,174	n.a.	n.a.
	August	74,579	74,377	11,450	11,405	n.a.	n.a.
	September	77,612	74,856	11,201	11,583	n.a.	n.a.
	October	74,292	75,821	11,513	11,771	n.a.	n.a.
	November	73,172	77,196	12,013	11,955	n.a.	n.a.
	December	80,779	78,699	12,421	12,106	n.a.	n.a.
1993	January	80,786	79,948	11,956	12,176	n.a.	n.a.
	February	82,376	80,754	12,597	12,111	n.a.	n.a.
	March	81,791	80,878	12,131	11,923	n.a.	n.a.
	April	77,560	80,298	10,939	11,720	n.a.	n.a.
	May	81,426	79,416	12,112	11,635	n.a.	n.a.
	June	77,305	78,817	11,240	11,702	n.a.	n.a.
	July	80,045	78,992	11,530	11,881	n.a.	n.a.
	August	76,918	79,756	12,575	12,088	n.a.	n.a.
	September	81,556	80,938	12,522	12,258	n.a.	n.a.
	October	83,635	82,134	12,734	12,351	n.a.	n.a.
	November	83,071	83,166	11,783	12,398	n.a.	n.a.
	December	86,932	84,320	12,460	12,526	n.a.	n.a.
1994	January	81,221	85,502	12,727	12,727	n.a.	n.a.
	February	87,780	86,695	13,083	12,981	n.a.	n.a.
	March	85,543	87,851	13,215	13,195	n.a.	n.a.
	April	92,122	88,821	13,601	13,300	n.a.	n.a.
	May	93,587	89,448	14,213	13,310	n.a.	n.a.
	June	84,327	89,627	11,879	13,207	n.a.	n.a.

TABLE 6 — HOTELS, MOTELS AND GUEST HOUSES WITH FACILITIES BY STAR GRADING, TASMANIA (a)

Particulars	Licensed hotels with facilities	Motels and guest houses	Star grading			Total
			1, 2 and Ungraded	3	4 and 5	
ESTABLISHMENTS, CAPACITY AND EMPLOYMENT						
<i>June quarter 1993—</i>						
Establishments	92	98	81	79	30	190
Guest rooms	3,421	1,837	1,303	2,483	1,472	5,258
Bed spaces	9,827	5,731	3,796	7,554	4,208	15,558
Employment (persons)	3,387	685	952	1,224	1,896	4,072
<i>June quarter 1994—</i>						
Establishments	91	86	73	82	22	177
Guest rooms	3,488	1,834	1,335	2,541	1,446	5,322
Bed spaces	9,961	5,617	3,774	7,710	4,094	15,578
Employment (persons)	3,468	751	904	1,324	1,991	4,219
ROOM NIGHTS OCCUPIED						
<i>June quarter 1993</i>	143,539	72,437	41,681	96,544	77,751	215,976
<i>1994—</i>						
April	62,447	35,155	20,177	46,980	30,445	97,602
May	58,594	28,465	15,765	39,195	32,099	87,059
June	42,762	20,317	11,870	28,107	23,102	63,079
<i>June quarter 1994</i>	163,803	83,937	47,812	114,282	85,646	247,740
ROOM OCCUPANCY RATES (per cent)						
<i>June quarter 1993</i>	46.1	43.4	35.2	42.7	58.1	45.1
<i>1994—</i>						
April	59.7	63.9	50.4	61.6	70.2	61.1
May	54.2	50.2	38.1	49.8	71.6	52.8
June	40.9	37.0	29.6	36.9	53.3	39.5
<i>June quarter 1994</i>	51.6	50.4	39.4	49.5	65.1	51.2
GUEST NIGHTS						
<i>June quarter 1993</i>	243,567	134,815	75,268	176,659	126,455	378,382
<i>1994—</i>						
April	107,027	67,482	38,519	88,187	47,803	174,509
May	87,914	48,759	27,073	65,880	43,720	136,673
June	68,856	36,201	21,703	50,278	33,076	105,057
<i>June quarter 1994</i>	263,797	152,442	87,295	204,345	124,599	416,239
BED OCCUPANCY RATES (per cent)						
<i>June quarter 1993</i>	27.2	25.9	21.8	25.7	33.0	26.7
<i>1994—</i>						
April	35.8	40.0	34.0	38.1	38.9	37.3
May	28.5	28.0	23.1	27.6	34.4	28.3
June	23.0	21.5	19.2	21.8	26.9	22.5
<i>June quarter 1994</i>	29.1	29.9	25.4	29.1	33.4	29.4
GUEST ARRIVALS						
<i>June quarter 1993</i>	125,395	75,402	45,306	100,894	54,597	200,797
<i>1994—</i>						
April	61,180	38,393	24,306	51,612	23,655	99,573
May	45,439	27,610	16,224	37,445	19,380	73,049
June	37,169	20,976	12,699	29,117	16,329	58,145
<i>June quarter 1994</i>	143,788	86,979	53,229	118,174	59,364	230,767
AVERAGE LENGTH OF STAY (days)						
<i>June quarter 1993</i>	1.9	1.8	1.7	1.8	2.3	1.9
<i>June quarter 1994</i>	1.8	1.8	1.6	1.7	2.1	1.8
TAKINGS FROM ACCOMMODATION (\$'000)						
<i>June quarter 1993</i>	10,811	4,361	2,249	5,729	7,195	15,172
<i>1994—</i>						
April	4,733	2,215	1,176	2,896	2,876	6,948
May	4,706	1,746	883	2,351	3,217	6,451
June	3,221	1,178	664	1,630	2,106	4,399
<i>June quarter 1994</i>	12,660	5,139	2,723	6,877	8,199	17,799

(a) From December quarter 1993, establishments with fewer than 5 rooms have been formally excluded from the scope of this collection. See Explanatory Note 2 (page 22).

TABLE 7 — HOTELS, MOTELS AND GUEST HOUSES WITH FACILITIES BY ESTABLISHMENT SIZE, TASMANIA (a)

Particulars	Establishment size (No. of rooms)						Total
	1-9 (a)	10-15	16-25	26-50	51-100	101+	
ESTABLISHMENTS, CAPACITY AND EMPLOYMENT							
<i>June quarter 1993—</i>							
Establishments	57	28	31	48	18	8	190
Guest rooms	336	318	634	1,603	1,119	1,248	5,258
Bed spaces	828	876	1,937	4,740	3,759	3,418	15,558
Employment (persons)	321	326	361	803	527	1,734	4,072
<i>June quarter 1994—</i>							
Establishments	43	27	32	49	18	8	177
Guest rooms	299	304	659	1,669	1,142	1,249	5,322
Bed spaces	763	824	1,930	4,973	3,648	3,440	15,578
Employment (persons)	253	321	383	928	540	1,794	4,219
ROOM NIGHTS OCCUPIED							
<i>June quarter 1993</i>	11,058	11,978	22,003	62,878	44,087	63,972	215,976
<i>1994—</i>							
April	4,476	5,240	9,928	31,439	21,225	25,294	97,602
May	3,691	4,191	7,681	26,443	17,966	27,087	87,059
June	2,882	3,027	5,858	19,381	13,351	18,580	63,079
<i>June quarter 1994</i>	11,049	12,458	23,467	77,263	52,542	70,961	247,740
ROOM OCCUPANCY RATES (per cent)							
<i>June quarter 1993</i>	36.3	41.4	38.1	43.1	43.3	56.3	45.1
<i>1994—</i>							
April	49.9	57.5	50.2	62.8	62.0	67.5	61.1
May	40.3	44.5	37.6	51.1	50.7	70.0	52.8
June	32.7	33.2	29.6	38.7	39.0	49.6	39.5
<i>June quarter 1994</i>	41.0	45.0	39.1	50.9	50.6	62.4	51.2
GUEST NIGHTS							
<i>June quarter 1993</i>	17,422	20,916	40,578	111,475	85,313	102,678	378,382
<i>1994—</i>							
April	7,238	9,233	18,778	59,313	42,062	37,885	174,509
May	5,920	6,694	12,739	44,370	31,150	35,800	136,673
June	4,580	4,950	9,977	34,533	24,567	26,450	105,057
<i>June quarter 1994</i>	17,738	20,877	41,494	138,216	97,779	100,135	416,239
BED OCCUPANCY RATES (per cent)							
<i>June quarter 1993</i>	23.2	26.2	23.0	25.8	24.9	33.0	26.7
<i>1994—</i>							
April	31.6	37.4	32.4	39.8	38.4	36.7	37.3
May	25.3	26.2	21.3	28.8	27.5	33.6	28.3
June	20.3	20.0	17.2	23.1	22.4	25.6	22.5
<i>June quarter 1994</i>	25.8	27.8	23.6	30.5	29.5	32.0	29.4
GUEST ARRIVALS							
<i>June quarter 1993</i>	11,525	12,103	22,826	67,108	48,945	38,290	200,797
<i>1994—</i>							
April	4,696	5,027	11,164	36,314	25,541	16,831	99,573
May	3,663	4,162	7,828	25,668	17,219	14,509	73,049
June	2,613	2,987	6,121	21,089	13,444	11,891	58,145
<i>June quarter 1994</i>	10,972	12,176	25,113	83,071	56,204	43,231	230,767
AVERAGE LENGTH OF STAY (days)							
<i>June quarter 1993</i>	1.5	1.7	1.8	1.7	1.7	2.7	1.9
<i>June quarter 1994</i>	1.6	1.7	1.7	1.7	1.7	2.3	1.8
TAKINGS FROM ACCOMMODATION (\$'000)							
<i>June quarter 1993</i>	556	655	1,172	3,654	3,263	5,872	15,172
<i>1994—</i>							
April	245	273	579	1,914	1,600	2,337	6,948
May	207	214	406	1,564	1,384	2,676	6,451
June	149	152	307	1,116	978	1,697	4,399
<i>June quarter 1994</i>	601	639	1,292	4,594	3,963	6,710	17,799

(a) From December quarter 1993, establishments with fewer than 5 rooms have been formally excluded from the scope of this collection. See Explanatory Note 2 (page 22).

TABLE 8 — HOTELS, MOTELS AND GUEST HOUSES WITH FACILITIES BY STATISTICAL DIVISION,
TASMANIA (a)

Particulars	Greater Hobart (SD)			Southern (SD)			Northern (SD)		
	Licensed hotels with facilities	Motels and guest houses	Total	Licensed hotels with facilities	Motels and guest houses	Total	Licensed hotels with facilities	Motels and guest houses	Total
ESTABLISHMENTS, CAPACITY AND EMPLOYMENT									
<i>June quarter 1993—</i>									
Establishments	26	28	54	14	14	28	30	25	55
Guest rooms	1,229	641	1,870	400	118	518	1,083	456	1,539
Bed spaces	3,223	1,941	5,164	1,294	412	1,706	3,326	1,513	4,839
Employment (persons)	1,554	205	1,759	218	62	280	1,102	137	1,239
<i>June quarter 1994—</i>									
Establishments	23	28	51	14	9	23	32	22	54
Guest rooms	1,210	648	1,858	472	98	570	1,093	446	1,539
Bed spaces	3,146	1,937	5,083	1,443	358	1,801	3,370	1,476	4,846
Employment (persons)	1,523	286	1,809	237	44	281	1,163	140	1,303
ROOM NIGHTS OCCUPIED									
<i>June quarter 1993</i>	60,126	26,868	86,994	13,374	3,526	16,900	46,333	20,684	67,017
<i>1994—</i>									
April	23,569	13,518	37,087	7,187	1,342	8,529	19,835	8,282	28,117
May	25,090	12,201	37,291	4,274	901	5,175	19,398	7,357	26,755
June	17,268	8,701	25,969	3,566	806	4,372	14,606	5,019	19,625
<i>June quarter 1994</i>	65,927	34,420	100,347	15,027	3,049	18,076	53,839	20,658	74,497
ROOM OCCUPANCY RATES (per cent)									
<i>June quarter 1993</i>	53.8	46.1	51.1	36.7	33.1	35.9	47.0	49.8	47.9
<i>1994—</i>									
April	64.9	69.5	66.5	50.8	45.6	49.9	60.5	61.9	60.9
May	66.9	60.7	64.7	29.2	30.7	29.5	57.2	53.2	56.1
June	47.6	44.8	46.6	25.2	29.0	25.8	44.5	37.5	42.5
<i>June quarter 1994</i>	59.9	58.4	59.3	35.0	35.2	35.0	54.1	50.9	53.2
GUEST NIGHTS									
<i>June quarter 1993</i>	98,288	49,307	147,595	27,486	7,562	35,048	77,539	39,608	117,147
<i>1994—</i>									
April	37,435	25,219	62,654	14,933	3,021	17,954	33,363	16,964	50,327
May	35,476	21,010	56,486	8,272	1,865	10,137	28,356	13,146	41,502
June	25,206	14,621	39,827	7,577	1,980	9,557	24,065	10,033	34,098
<i>June quarter 1994</i>	98,117	60,850	158,967	30,782	6,866	37,648	85,784	40,143	125,927
BED OCCUPANCY RATES (per cent)									
<i>June quarter 1993</i>	33.5	27.9	31.4	23.3	20.3	22.6	25.6	28.8	26.6
<i>1994—</i>									
April	39.7	43.4	41.1	34.5	28.1	33.2	33.0	38.3	34.6
May	36.4	35.0	35.8	18.5	17.2	18.2	27.1	28.7	27.6
June	26.7	25.2	26.1	17.5	19.1	17.8	23.8	22.7	23.5
<i>June quarter 1994</i>	34.3	34.5	34.4	23.4	21.5	23.1	28.0	29.9	28.6
GUEST ARRIVALS									
<i>June quarter 1993</i>	35,252	23,752	59,004	20,729	5,449	26,178	42,850	21,291	64,141
<i>1994—</i>									
April	15,314	12,336	27,650	11,753	1,856	13,609	19,556	8,819	28,375
May	13,570	9,971	23,541	6,441	1,484	7,925	15,254	7,311	22,565
June	11,127	7,439	18,566	5,446	1,308	6,754	13,186	5,823	19,009
<i>June quarter 1994</i>	40,011	29,746	69,757	23,640	4,648	28,288	47,996	21,953	69,949
AVERAGE LENGTH OF STAY (days)									
<i>June quarter 1993</i>	2.8	2.1	2.5	1.3	1.4	1.3	1.8	1.9	1.8
<i>June quarter 1994</i>	2.5	2.0	2.3	1.3	1.5	1.3	1.8	1.8	1.8
TAKINGS FROM ACCOMMODATION (\$'000)									
<i>June quarter 1993</i>	5,247	1,609	6,856	756	239	995	3,202	1,197	4,399
<i>1994—</i>									
April	2,055	855	2,910	427	85	512	1,442	496	1,939
May	2,376	758	3,134	248	50	298	1,385	450	1,835
June	1,491	473	1,964	213	51	264	996	295	1,291
<i>June quarter 1994</i>	5,921	2,086	8,007	888	186	1,074	3,824	1,241	5,065

TABLE 8 — HOTELS, MOTELS AND GUEST HOUSES WITH FACILITIES BY STATISTICAL DIVISION,
TASMANIA (a)—continued

Particulars	Mersey-Lyell (SD)			Total Tasmania			East Coast (b)
	Licensed hotels with facilities	Motels and guest houses	Total	Licensed hotels with facilities	Motels and guest houses	Total	Total
ESTABLISHMENTS, CAPACITY AND EMPLOYMENT							
<i>June quarter 1993—</i>							
Establishments	22	31	53	92	98	190	15
Guest rooms	709	622	1,331	3,421	1,837	5,258	441
Bed spaces	1,984	1,865	3,849	9,827	5,731	15,558	1,433
Employment (persons)	513	281	794	3,387	685	4,072	217
<i>June quarter 1994—</i>							
Establishments	22	27	49	91	86	177	14
Guest rooms	713	642	1,355	3,488	1,834	5,322	447
Bed spaces	2,002	1,846	3,848	9,961	5,617	15,578	1,432
Employment (persons)	545	281	826	3,468	751	4,219	229
ROOM NIGHTS OCCUPIED							
<i>June quarter 1993</i>	23,706	21,359	45,065	143,539	72,437	215,976	13,528
<i>1994—</i>							
April	11,856	12,013	23,869	62,447	35,155	97,602	6,327
May	9,832	8,006	17,838	58,594	28,465	87,059	3,940
June	7,322	5,791	13,113	42,762	20,317	63,079	3,615
<i>June quarter 1994</i>	29,010	25,810	54,820	163,803	83,937	247,740	13,882
ROOM OCCUPANCY RATES (per cent)							
<i>June quarter 1993</i>	36.7	37.7	37.2	46.1	43.4	45.1	33.7
<i>1994—</i>							
April	55.4	62.4	58.7	59.7	63.9	61.1	47.2
May	44.5	40.2	42.5	54.2	50.2	52.8	28.4
June	34.2	30.1	32.3	40.9	37.0	39.5	27.0
<i>June quarter 1994</i>	44.7	44.2	44.5	51.6	50.4	51.2	34.1
GUEST NIGHTS							
<i>June quarter 1993</i>	40,254	38,338	78,592	243,567	134,815	378,382	27,718
<i>1994—</i>							
April	21,296	22,278	43,574	107,027	67,482	174,509	13,241
May	15,810	12,738	28,548	87,914	48,759	136,673	7,603
June	12,008	9,567	21,575	68,856	36,201	105,057	7,830
<i>June quarter 1994</i>	49,114	44,583	93,697	263,797	152,442	416,239	28,674
BED OCCUPANCY RATES (per cent)							
<i>June quarter 1993</i>	22.3	22.6	22.4	27.2	25.9	26.7	21.3
<i>1994—</i>							
April	35.5	40.2	37.7	35.8	40.0	37.3	30.8
May	25.5	22.3	23.9	28.5	28.0	28.3	17.1
June	20.0	17.3	18.7	23.0	21.5	22.5	18.2
<i>June quarter 1994</i>	27.0	26.5	26.8	29.1	29.9	29.4	22.0
GUEST ARRIVALS							
<i>June quarter 1993</i>	26,564	24,910	51,474	125,395	75,402	200,797	20,362
<i>1994—</i>							
April	14,557	15,382	29,939	61,180	38,393	99,573	10,297
May	10,174	8,844	19,018	45,439	27,610	73,049	5,974
June	7,410	6,406	13,816	37,169	20,976	58,145	5,222
<i>June quarter 1994</i>	32,141	30,632	62,773	143,788	86,979	230,767	21,493
AVERAGE LENGTH OF STAY (days)							
<i>June quarter 1993</i>	1.5	1.5	1.5	1.9	1.8	1.9	1.4
<i>June quarter 1994</i>	1.5	1.5	1.5	1.8	1.8	1.8	1.3
TAKINGS FROM ACCOMMODATION (\$'000)							
<i>June quarter 1993</i>	1,605	1,317	2,922	10,811	4,361	15,172	735
<i>1994—</i>							
April	809	779	1,588	4,733	2,215	6,948	363
May	696	488	1,184	4,706	1,746	6,451	204
June	521	359	880	3,221	1,178	4,399	193
<i>June quarter 1994</i>	2,026	1,626	3,652	12,660	5,139	17,799	760

(a) From December quarter 1993, establishments with fewer than 5 rooms have been formally excluded from the scope of this collection. See Explanatory Note 2 (page 22).

(b) The East Coast Tourist Area was defined up to June 1993 as comprising Spring Bay, Glamorgan, Fingal and Portland municipalities. From September quarter 1993, the East Coast Tourist Area has been defined as comprising Glamorgan/Spring Bay (M) and Break O' Day (M).

TABLE 9 — HOTELS, MOTELS AND GUEST HOUSES WITH FACILITIES: STATISTICAL DIVISIONS

Statistical Divisions and selected Statistical Local Areas	Establish- ments	Guest rooms	Bed spaces	Employ- ment (persons)	Room nights occupied				Room occupancy rates (per cent)			
					Apr.	May	June	June qtr	Apr.	May	June	June qtr
					Clarence (C)	4	54	149	62	879	768	453
Glenorchy (C)	7	173	444	109	2,912	2,464	1,671	7,047	56.1	45.9	32.2	44.8
Hobart (C) — Inner	6	431	1,082	180	8,899	8,353	5,155	22,407	68.8	62.5	39.9	57.1
Hobart (C) — Remainder	30	1,142	3,225	1,406	23,630	25,056	18,231	66,917	69.0	70.8	53.2	64.4
Balance	4	58	183	52	767	650	459	1,876	44.1	36.2	26.4	35.5
<i>Greater Hobart (SD)</i>	<i>51</i>	<i>1,858</i>	<i>5,083</i>	<i>1,809</i>	<i>37,087</i>	<i>37,291</i>	<i>25,969</i>	<i>100,347</i>	<i>66.5</i>	<i>64.7</i>	<i>46.6</i>	<i>59.3</i>
Glamorgan/Spring Bay (M)	9	286	1,009	145	4,441	2,724	2,438	9,603	51.8	30.7	28.4	36.9
Tasman (M)	6	133	417	83	2,655	1,555	1,303	5,513	66.5	38.7	32.7	45.9
Balance	8	151	375	53	1,433	896	631	2,960	31.6	19.1	14.4	21.8
<i>Southern (SD)</i>	<i>23</i>	<i>570</i>	<i>1,801</i>	<i>281</i>	<i>8,529</i>	<i>5,175</i>	<i>4,372</i>	<i>18,076</i>	<i>49.9</i>	<i>29.5</i>	<i>25.8</i>	<i>35.0</i>
Break O'Day (M)	5	161	423	84	1,886	1,216	1,177	4,279	39.0	24.4	24.4	29.2
Launceston (C) — Inner	10	467	1,309	336	9,775	10,288	7,056	27,119	69.8	71.1	50.4	63.8
Launceston (C) Pt. B	22	589	2,143	274	11,196	10,357	7,584	29,137	63.4	56.7	42.9	54.4
Northern Midlands (M) Pts. A and B	3	23	70	22	276	298	204	778	40.0	41.8	29.6	37.2
West Tamar (M) Pt. A	6	86	276	73	1,196	1,077	756	3,029	46.4	40.4	29.3	38.7
Balance	8	213	625	514	3,788	3,519	2,848	10,155	59.3	53.3	44.6	52.4
<i>Northern (SD)</i>	<i>54</i>	<i>1,539</i>	<i>4,846</i>	<i>1,303</i>	<i>28,117</i>	<i>26,755</i>	<i>19,625</i>	<i>74,497</i>	<i>60.9</i>	<i>56.1</i>	<i>42.5</i>	<i>53.2</i>
Burnie (C) Pt. A	7	221	564	125	3,594	3,201	2,729	9,524	54.2	46.7	41.2	47.4
Central Coast (M) Pt. A	5	116	282	120	1,794	1,094	889	3,777	51.6	30.4	25.5	35.8
Circular Head (M)	3	95	245	89	1,694	1,208	952	3,854	59.4	41.0	33.4	44.6
Devonport (C)	8	239	697	133	4,193	3,167	2,431	9,791	58.5	42.7	33.9	45.0
Waratah/Wynyard (M) Pts. A and B	8	135	371	61	1,691	934	887	3,512	41.8	22.3	21.9	28.6
West Coast (M)	11	396	1,124	161	7,223	4,930	2,587	14,740	60.8	40.2	21.8	40.9
Balance	7	153	565	137	3,680	3,304	2,638	9,622	80.2	69.7	57.5	69.1
<i>Mersey-Lyell (SD)</i>	<i>49</i>	<i>1,355</i>	<i>3,848</i>	<i>826</i>	<i>23,869</i>	<i>17,838</i>	<i>13,113</i>	<i>54,820</i>	<i>58.7</i>	<i>42.5</i>	<i>32.3</i>	<i>44.5</i>
<i>Total Tasmania</i>	<i>177</i>	<i>5,322</i>	<i>15,578</i>	<i>4,219</i>	<i>97,602</i>	<i>87,059</i>	<i>63,079</i>	<i>247,740</i>	<i>61.1</i>	<i>52.8</i>	<i>39.5</i>	<i>51.2</i>

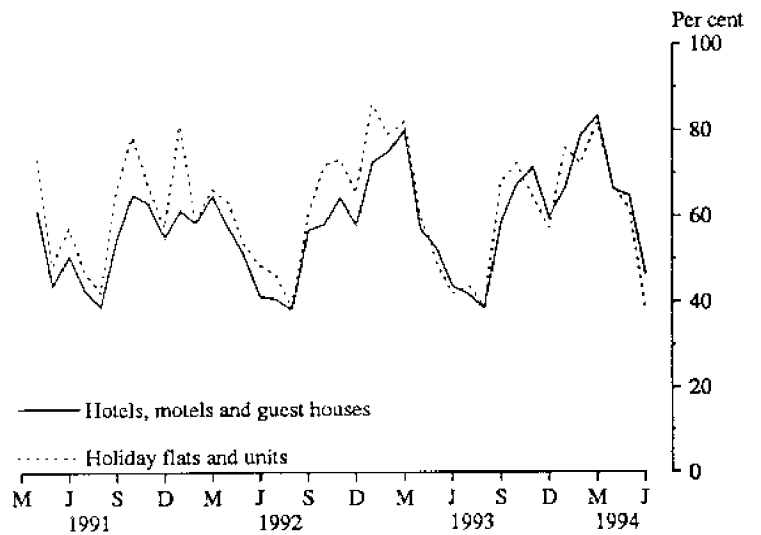
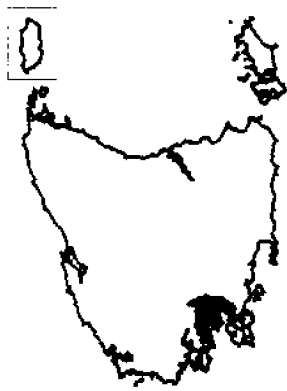
AND SELECTED STATISTICAL LOCAL AREAS, TASMANIA, JUNE QUARTER 1994

<i>Guest nights</i>				<i>Guest arrivals</i>				<i>Takings from accommodation (\$'000)</i>			
<i>Apr.</i>	<i>May</i>	<i>June</i>	<i>June qtr</i>	<i>Apr.</i>	<i>May</i>	<i>June</i>	<i>June qtr</i>	<i>Apr.</i>	<i>May</i>	<i>June</i>	<i>June qtr</i>
1,748	1,456	770	3,974	769	732	469	1,970	58	50	27	135
5,197	3,845	2,643	11,685	2,682	2,120	1,516	6,318	145	110	75	330
15,054	12,349	7,788	35,191	5,611	4,964	3,289	13,864	614	587	338	1,539
39,053	37,652	27,801	104,506	17,428	14,950	12,923	45,301	2,045	2,347	1,500	5,892
1,602	1,184	825	3,611	1,160	775	369	2,304	48	40	24	112
62,654	56,486	39,827	158,967	27,650	23,541	18,566	69,757	2,910	3,134	1,964	8,007
9,508	5,389	5,442	20,339	7,195	4,134	3,614	14,943	258	144	140	542
6,017	3,248	3,030	12,295	4,634	2,673	2,298	9,605	175	99	82	357
2,429	1,500	1,085	5,014	1,780	1,118	842	3,740	78	55	42	175
17,954	10,137	9,557	37,648	13,609	7,925	6,754	28,288	512	298	264	1,074
3,733	2,214	2,388	8,335	3,102	1,840	1,608	6,550	105	60	53	218
16,099	14,179	11,180	41,458	9,246	7,375	6,046	22,667	722	759	488	1,969
22,859	18,217	15,426	56,502	11,239	9,163	8,243	28,645	678	617	445	1,740
465	478	338	1,281	310	307	205	822	12	12	7	32
2,344	2,076	1,463	5,883	1,302	1,297	925	3,524	62	57	36	155
4,827	4,338	3,303	12,468	3,176	2,583	1,982	7,741	360	329	263	952
50,327	41,502	34,098	125,927	28,375	22,565	19,009	69,949	1,939	1,835	1,291	5,065
5,372	4,129	3,752	13,253	4,215	3,232	2,680	10,127	212	196	173	581
3,082	1,559	1,289	5,930	1,628	987	792	3,407	89	52	44	185
3,124	1,893	1,498	6,515	2,351	1,387	1,012	4,750	90	60	44	194
7,055	4,407	3,319	14,781	4,523	3,106	2,316	9,945	272	201	152	625
3,149	1,599	1,747	6,495	2,347	1,064	1,169	4,580	89	46	43	178
13,637	8,141	4,395	26,173	9,956	5,300	3,056	18,312	429	280	163	872
8,155	6,820	5,575	20,550	4,919	3,942	2,791	11,652	406	350	262	1,018
43,574	28,548	21,575	93,697	29,939	19,018	13,816	62,773	1,588	1,184	880	3,652
174,509	136,673	105,057	416,239	99,573	73,049	58,145	230,767	6,948	6,451	4,399	17,799

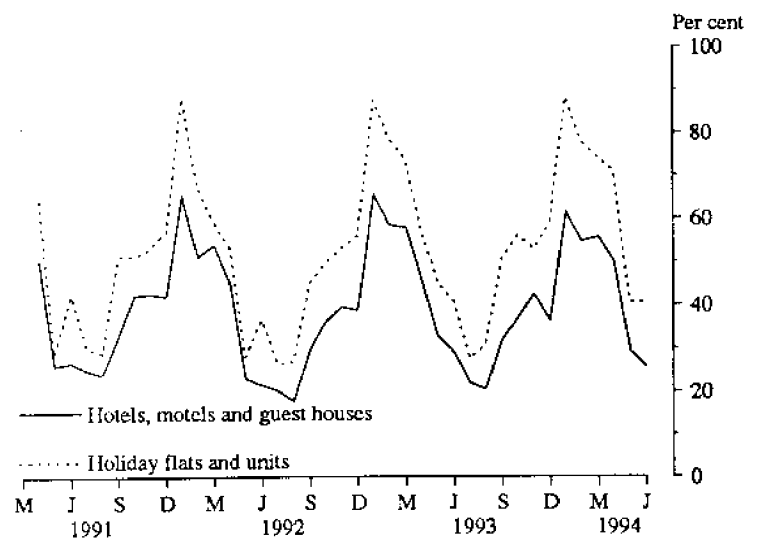
MONTHLY ROOM/UNIT OCCUPANCY RATES

Graphs on these pages compare room occupancy rates for hotels, motels and guest houses with unit occupancy rates for holiday unit establishments for each Statistical Division and the East Coast Tourist area.

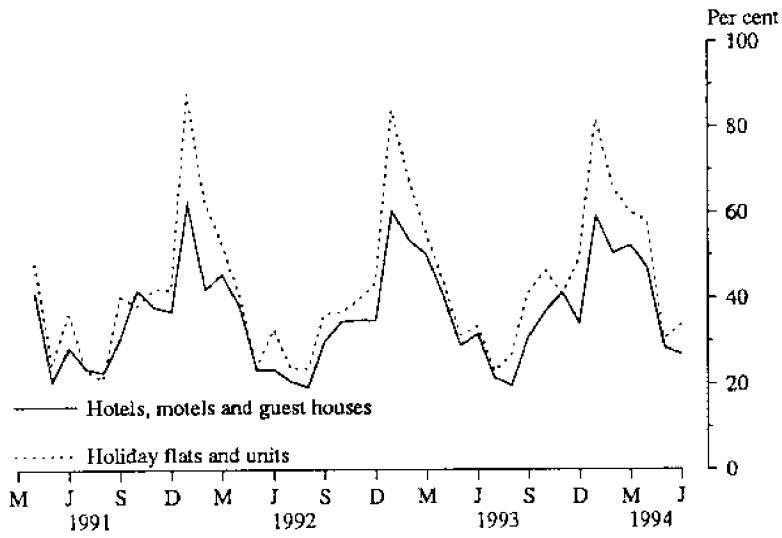
GREATER HOBART STATISTICAL DIVISION



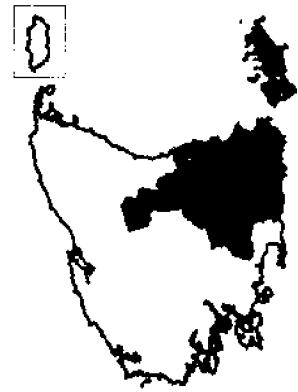
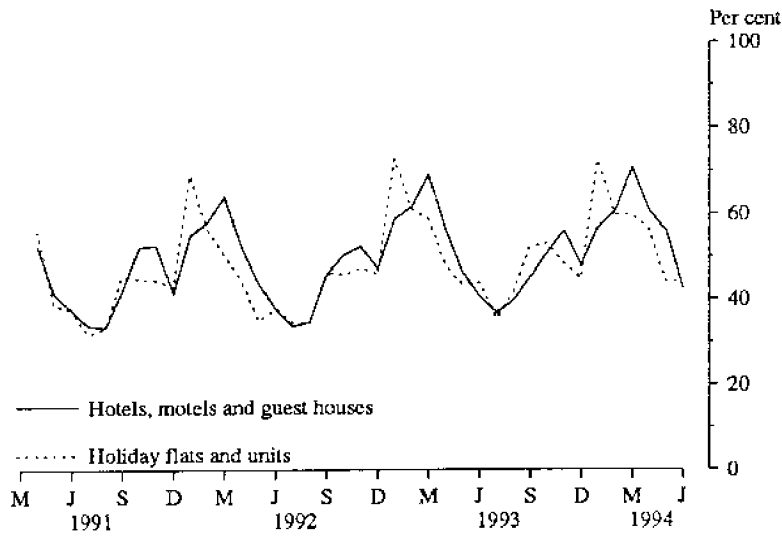
SOUTHERN STATISTICAL DIVISION



EAST COAST TOURIST AREA



NORTHERN STATISTICAL DIVISION



MERSEY-LYELL STATISTICAL DIVISION

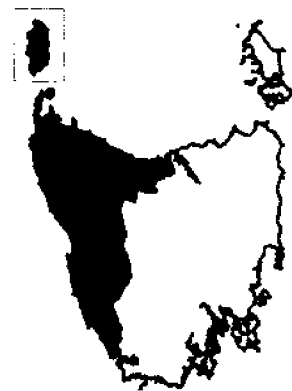
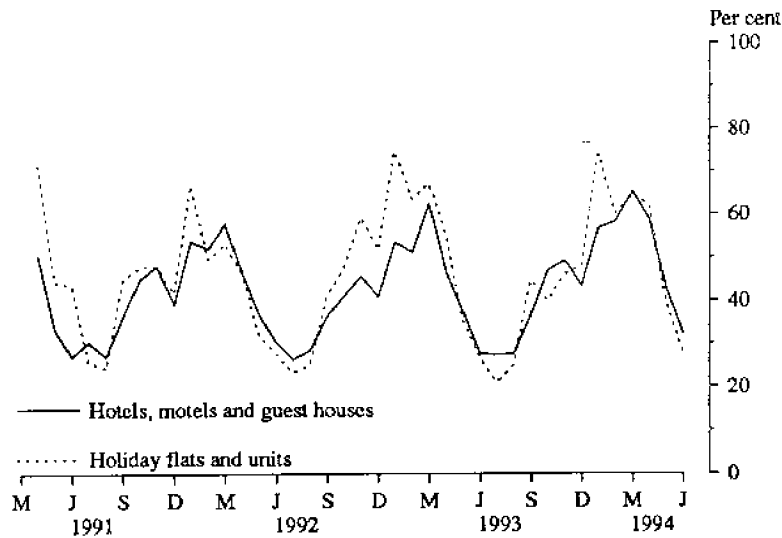


TABLE 10 — HOLIDAY FLATS, UNITS AND HOUSES BY STATISTICAL DIVISION AND SELECTED STATISTICAL AREAS, TASMANIA

Particulars	Northern (SD)				Total	Mersey-Lyell (SD)	Total Tasmania	East Coast (a)
	Greater Hobart (SD)	Southern (SD)	Greater Launceston and Central North (SSDs)	North Eastern (SSD)				
LETTING ENTITIES, CAPACITY AND EMPLOYMENT								
<i>June quarter 1993—</i>								
Letting entities	11	9	7	6	13	12	45	11
Flats, units and houses								
Single bedroom	51	14	110	26	136	26	227	34
Multiple bedroom	162	83	105	65	170	93	508	119
<i>Total flats, units and houses</i>	<i>213</i>	<i>97</i>	<i>215</i>	<i>91</i>	<i>306</i>	<i>119</i>	<i>735</i>	<i>153</i>
Bed spaces	870	509	841	464	1,305	563	3,247	790
Employment (persons)	56	51	114	26	140	43	290	60
<i>June quarter 1994—</i>								
Letting entities	13	9	9	7	16	14	52	11
Flats, units and houses								
Single bedroom	53	17	118	30	148	42	260	41
Multiple bedroom	173	80	112	71	183	97	533	95
<i>Total flats, units and houses</i>	<i>226</i>	<i>97</i>	<i>230</i>	<i>101</i>	<i>331</i>	<i>139</i>	<i>793</i>	<i>136</i>
Bed spaces	981	509	872	476	1,348	648	3,486	637
Employment (persons)	65	44	125	30	155	49	313	49
UNIT NIGHTS OCCUPIED								
<i>June quarter 1993</i>	<i>9,824</i>	<i>4,193</i>	<i>10,295</i>	<i>2,277</i>	<i>12,572</i>	<i>4,227</i>	<i>30,816</i>	<i>5,054</i>
<i>1994—</i>								
April	4,553	2,064	4,564	1,048	5,612	2,585	14,814	2,372
May	4,324	1,224	3,867	658	4,525	1,685	11,758	1,295
June	2,639	1,179	3,491	881	4,372	1,164	9,354	1,373
<i>June quarter 1994</i>	<i>11,516</i>	<i>4,467</i>	<i>11,922</i>	<i>2,587</i>	<i>14,509</i>	<i>5,434</i>	<i>35,926</i>	<i>5,040</i>
UNIT OCCUPANCY RATES (per cent)								
<i>June quarter 1993</i>	<i>50.7</i>	<i>47.5</i>	<i>52.6</i>	<i>27.5</i>	<i>45.1</i>	<i>39.0</i>	<i>46.1</i>	<i>36.3</i>
<i>1994—</i>								
April	67.2	70.9	66.1	34.6	56.5	62.0	62.3	58.1
May	61.7	40.7	54.2	21.0	44.1	39.1	47.8	30.7
June	38.9	40.5	50.6	29.1	44.0	27.9	39.3	33.7
<i>June quarter 1994</i>	<i>56.0</i>	<i>50.6</i>	<i>57.0</i>	<i>28.1</i>	<i>48.2</i>	<i>43.0</i>	<i>49.8</i>	<i>40.7</i>
UNIT LETTINGS								
<i>June quarter 1993</i>	<i>3,128</i>	<i>2,464</i>	<i>5,562</i>	<i>1,041</i>	<i>6,603</i>	<i>2,298</i>	<i>14,493</i>	<i>2,554</i>
<i>1994—</i>								
April	1,706	1,209	2,331	488	2,819	1,375	7,109	1,215
May	1,406	783	1,996	305	2,301	920	5,410	689
June	857	663	1,874	391	2,265	624	4,409	667
<i>June quarter 1994</i>	<i>3,969</i>	<i>2,655</i>	<i>6,201</i>	<i>1,184</i>	<i>7,385</i>	<i>2,919</i>	<i>16,928</i>	<i>2,571</i>
AVERAGE LENGTH OF STAY (days)								
<i>June quarter 1993</i>	<i>3.1</i>	<i>1.7</i>	<i>1.9</i>	<i>2.2</i>	<i>1.9</i>	<i>1.8</i>	<i>2.1</i>	<i>2.0</i>
<i>1994—</i>								
April	2.7	1.7	2.0	2.1	2.0	1.9	2.1	2.0
May	3.1	1.6	1.9	2.2	2.0	1.8	2.2	1.9
June	3.1	1.8	1.9	2.3	1.9	1.9	2.1	2.1
<i>June quarter 1994</i>	<i>2.9</i>	<i>1.7</i>	<i>1.9</i>	<i>2.2</i>	<i>2.0</i>	<i>1.9</i>	<i>2.1</i>	<i>2.0</i>
TAKINGS FROM ACCOMMODATION (\$'000)								
<i>June quarter 1993</i>	<i>629</i>	<i>281</i>	<i>717</i>	<i>114</i>	<i>831</i>	<i>251</i>	<i>1,992</i>	<i>311</i>
<i>1994—</i>								
April	321	152	359	55	414	159	1,046	155
May	288	90	287	32	319	89	786	84
June	169	80	261	38	299	75	623	85
<i>June quarter 1994</i>	<i>777</i>	<i>322</i>	<i>908</i>	<i>125</i>	<i>1,033</i>	<i>323</i>	<i>2,455</i>	<i>324</i>

(a) The East Coast Tourist Area was defined up to June 1993 as comprising Spring Bay, Glamorgan, Fingal and Portland municipalities. From September quarter 1993, the East Coast Tourist Area has been defined as comprising Glamorgan/Spring Bay (M) and Break O'Day (M).

TABLE 11 — CARAVAN PARKS BY STATISTICAL DIVISION AND SELECTED STATISTICAL AREAS, TASMANIA

Particulars	Northern (SD)					Mersey-Lyell (SD)	Total Tasmania	East Coast (a)
	Greater Hobart (SD)	Southern (SD)	Greater Launceston and Central North (SSDs)	North Eastern (SSD)	Total			
ESTABLISHMENTS, CAPACITY AND EMPLOYMENT								
<i>June quarter 1993—</i>								
Establishments	7	17	10	9	19	24	67	10
Capacity								
On-site vans	68	67	58	27	85	162	382	57
Other powered sites	263	680	492	524	1,016	1,329	3,288	527
Unpowered sites	212	374	517	642	1,159	550	2,295	474
Cabins, flats, etc.	43	111	56	20	76	150	380	59
<i>Total capacity</i>	<i>586</i>	<i>1,232</i>	<i>1,123</i>	<i>1,213</i>	<i>2,336</i>	<i>2,191</i>	<i>6,345</i>	<i>1,117</i>
Sites occupied by long-term guests	76	25	102	9	111	165	377	25
Other sites permanently reserved	5	296	93	292	385	186	872	331
Employment (persons)	22	59	29	22	51	70	202	37
<i>June quarter 1994—</i>								
Establishments	8	17	11	8	19	26	70	11
Capacity								
On-site vans	78	65	51	25	76	182	401	63
Other powered sites	301	780	498	516	1,014	1,371	3,466	647
Unpowered sites	264	408	521	625	1,146	608	2,426	554
Cabins, flats, etc.	62	104	60	18	78	171	415	61
<i>Total capacity</i>	<i>705</i>	<i>1,357</i>	<i>1,130</i>	<i>1,184</i>	<i>2,314</i>	<i>2,332</i>	<i>6,708</i>	<i>1,325</i>
Sites occupied by long-term guests	92	24	83	8	91	200	407	30
Other sites permanently reserved	11	334	96	288	384	227	956	363
Employment (persons)	35	57	33	20	53	74	219	36
SITE NIGHTS OCCUPIED								
<i>June quarter 1993</i>	<i>13,290</i>	<i>40,001</i>	<i>25,310</i>	<i>34,030</i>	<i>59,340</i>	<i>51,861</i>	<i>164,492</i>	<i>40,729</i>
<i>1994—</i>								
April	7,381	16,217	9,186	12,673	21,859	20,800	66,257	16,870
May	5,615	13,257	7,487	10,690	18,177	17,651	54,700	14,398
June	5,253	12,358	6,645	10,311	16,956	16,234	50,801	13,519
<i>June quarter 1994</i>	<i>18,249</i>	<i>41,832</i>	<i>23,318</i>	<i>33,674</i>	<i>56,992</i>	<i>54,685</i>	<i>171,758</i>	<i>44,787</i>
SITE OCCUPANCY RATES (per cent)								
June quarter 1993	24.9	35.7	24.8	30.8	27.9	26.0	28.5	40.1
<i>1994—</i>								
April	34.9	39.8	27.1	35.7	31.5	29.7	32.9	42.4
May	25.7	31.5	21.4	29.1	25.3	24.4	26.3	35.1
June	24.8	30.4	19.6	29.0	24.4	23.2	25.2	34.0
June quarter 1994	28.4	33.9	22.7	31.3	27.1	25.8	28.1	37.1
TAKINGS FROM ACCOMMODATION (\$'000)								
<i>June quarter 1993</i>	<i>201</i>	<i>293</i>	<i>243</i>	<i>110</i>	<i>353</i>	<i>465</i>	<i>1,311</i>	<i>214</i>
<i>1994—</i>								
April	123	139	119	48	167	219	648	111
May	88	72	81	24	104	163	428	62
June	70	58	62	21	83	147	359	53
<i>June quarter 1994</i>	<i>281</i>	<i>270</i>	<i>262</i>	<i>93</i>	<i>355</i>	<i>529</i>	<i>1,435</i>	<i>227</i>

(a) The East Coast Tourist Area was defined up to June 1993 as comprising Spring Bay, Glamorgan, Fingal and Portland municipalities. From September quarter 1993, the East Coast Tourist Area has been defined as comprising Glamorgan/Spring Bay (M) and Break O'Day (M).

TABLE 12 — VISITOR HOSTELS BY STATISTICAL DIVISION, TASMANIA

<i>Particulars</i>	<i>Greater Hobart (SD) and Southern (SD)</i>	<i>Northern (SD)</i>	<i>Mersey-Lyell (SD)</i>	<i>Total Tasmania</i>
ESTABLISHMENTS, CAPACITY AND EMPLOYMENT				
<i>June quarter 1993—</i>				
Establishments	20	10	9	39
Bed spaces	671	310	494	1,475
Employment (persons)	47	17	30	94
<i>June quarter 1994—</i>				
Establishments	18	9	9	36
Bed spaces	625	283	542	1,450
Employment (persons)	53	12	25	90
GUEST NIGHTS				
<i>June quarter 1993</i>	9,286	2,535	2,847	14,668
<i>1994—</i>				
April	4,453	1,131	2,992	8,576
May	2,243	473	1,215	3,931
June	1,479	437	691	2,607
<i>June quarter 1994</i>	8,175	2,041	4,898	15,114
BED OCCUPANCY RATES (per cent)				
<i>June quarter 1993</i>	15.2	9.0	6.3	10.9
<i>1994—</i>				
April	23.7	13.3	18.4	19.7
May	11.6	5.4	7.2	8.7
June	8.0	5.1	4.2	6.0
<i>June quarter 1994</i>	14.4	7.9	9.9	11.5
GUEST ARRIVALS				
<i>June quarter 1993</i>	6,386	1,660	2,379	10,425
<i>1994—</i>				
April	2,928	732	1,446	5,106
May	1,481	367	761	2,609
June	1,011	266	449	1,726
<i>June quarter 1994</i>	5,420	1,365	2,656	9,441
AVERAGE LENGTH OF STAY (days)				
<i>June quarter 1993</i>	1.5	1.5	1.2	1.4
<i>1994—</i>				
April	1.5	1.5	2.1	1.7
May	1.5	1.3	1.6	1.5
June	1.5	1.6	1.5	1.5
<i>June quarter 1994</i>	1.5	1.5	1.8	1.6
TAKINGS FROM ACCOMMODATION (\$'000)				
<i>June quarter 1993</i>	117	23	26	166
<i>1994—</i>				
April	56	11	30	97
May	30	5	12	47
June	18	4	8	31
<i>June quarter 1994</i>	104	19	51	175

TABLE 13. PASSENGER ARRIVALS AND DEPARTURES, TASMANIA,
INTERSTATE AND INTERNATIONAL (a)(d)

(Source: Tourism, Sport & Recreation)

Period	Arrivals			Total	Total Departures (b)	Cruise Ships (c)	
	By air		By sea			Arrivals	Departures
	Interstate	International					
1986	524,342	10,136	95,139	629,617	628,245	n.a.	n.a.
1987	526,517	9,446	88,343	624,306	626,297	7,398	6,745
1988	571,344	8,625	101,572	681,541	683,635	5,497	6,161
1989	449,481	8,489	118,646	576,616	591,152	4,149	4,149
1990	555,631	8,629	120,004	684,264	679,833	3,255	3,255
1991	625,366	5,897	131,375	762,638	764,731	6,720	6,663
1992	652,092	4,428	114,969	771,489	761,109	4,608	4,608
1993	694,244	5,144	115,381	814,769	814,835	2,033	2,033
1992-							
January	75,114	336	13,008	88,458	105,888	453	453
February	54,086	514	11,417	66,017	50,511	2,528	2,528
March	52,204	397	13,111	65,712	69,262	1,627	1,627
April	59,254	389	12,178	71,821	74,902	-	-
May	44,058	424	5,541	50,023	58,249	-	-
June	46,293	307	5,754	52,354	49,661	-	-
July	46,957	210	5,156	52,323	54,820	-	-
August	42,044	335	4,899	47,278	51,723	-	-
September	58,021	427	10,288	68,736	55,890	-	-
October	56,678	408	8,454	65,540	64,890	-	-
November	52,044	296	8,625	60,965	59,016	-	-
December	65,339	385	16,538	82,262	66,297	-	-
1993-							
January	71,801	513	15,475	87,789	107,018	150	150
February	60,624	697	12,278	73,558	65,492	697	697
March	57,002	586	13,040	70,491	73,559	586	586
April	62,846	340	12,083	75,269	80,402	-	-
May	45,373	451	5,741	51,565	61,725	-	-
June	51,154	258	6,067	57,479	54,776	-	-
July	45,868	523	4,855	51,246	53,956	-	-
August	45,988	357	4,553	50,898	55,644	-	-
September	62,578	379	9,415	72,372	58,126	-	-
October	57,362	434	7,965	65,761	65,042	-	-
November	59,592	393	8,561	68,546	66,733	-	-
December	74,056	391	15,348	89,795	72,362	600	600
1994-							
January	73,470	473	12,536	86,479	103,610	1,596	1,596
February	63,506	413	12,324	76,243	69,881	2,470	2,470
March	66,848	414	13,054	80,316	85,030	1,064	1,064

(a) The following persons are not included in these statistics : passengers under three years of age accompanied by an adult ; passengers travelling on chartered flights with minor carriers ; passengers travelling on private or VIP flights.

(b) The proportion of departing passengers who were visitors was shown to be about 58 per cent in the 1981 Tasmanian Visitor Survey, around 55 per cent in the 1984 TVS, about 53 per cent in the 1986 TVS, nearly 60 per cent in the 1988 TVS, close to 65 per cent in the 1990 TVS, almost 58 per cent in the 1991 TVS and almost 55 per cent in the 1992 TVS.

(c) Cruise ship statistics were not collected before November 1986 and are not included in Total Arrivals and Total Departures.

(d) The domestic airline pilots dispute commenced on 18 August 1989 with the pilots working restricted hours (9 a.m to 5 p.m). The pilots were suspended on 23 August 1989.

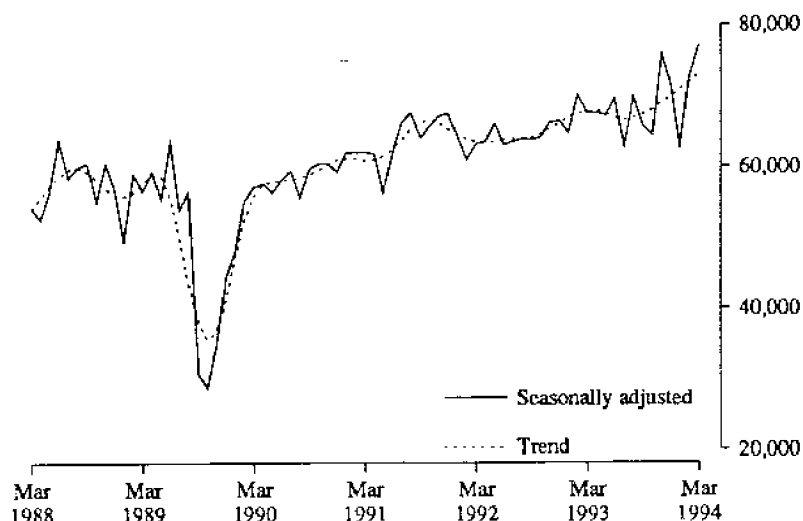
TABLE 14. TOTAL PASSENGER ARRIVALS BY AIR AND SEA INTO TASMANIA :
SEASONALLY ADJUSTED AND TREND SERIES (a)(b)

Period	Original	Seasonally adjusted (a)	Trend
December 1985	65,870	54,191	53,944
1986	65,323	53,911	52,541
1987	63,187	52,826	53,762
1988	68,809	57,840	56,550
1989	53,613	45,296	41,598
1990	73,421	59,256	60,924
1991	83,162	67,473	65,244
1992	82,262	66,428	66,156
1993	89,795	71,645	69,845
1992-			
January	88,458	64,183	64,453
February	66,017	60,988	63,853
March	65,712	63,177	63,486
April	71,821	63,432	63,396
May	50,023	66,053	63,545
June	52,354	62,996	63,726
July	52,323	63,461	63,858
August	47,278	63,849	63,885
September	68,736	63,739	64,060
October	65,540	64,123	64,569
November	60,965	66,184	65,341
December	82,262	66,428	66,156
1993-			
January	87,789	64,622	66,955
February	73,558	70,134	67,538
March	70,491	67,507	67,825
April	75,269	67,590	67,857
May	51,565	67,264	67,472
June	57,479	69,496	66,901
July	51,246	62,591	66,705
August	50,898	69,802	66,961
September	72,372	65,696	67,463
October	65,761	64,403	68,100
November	68,546	75,792	68,915
December	89,795	71,645	69,845
1994-			
January	86,479	62,688	70,825
February	76,243	72,692	71,837
March	80,316	77,140	73,161

(a) There is an annual recalculation of seasonal adjustment factors to include the most recent year's arrivals. This occurs at the end of each financial year and may cause revisions to previously-published seasonally-adjusted and trend figures, as can be seen in Table 11. A full printout of seasonally-adjusted and trend series figures dating back to 1971 can be obtained through the publication officer for this publication (Eddie Oakford).

(b) The domestic airline dispute commenced on 18 August 1989 with the pilots working restricted hours (9 a.m. to 5 p.m.). The pilots were suspended on 23 August 1989.

TOTAL ARRIVALS IN TASMANIA



CHANGES TO GEOGRAPHIC BOUNDARIES, TASMANIA (Effective 1 July 1993)

As from 1 July 1993, substantial changes have been made to Local Government Area (LGA) boundaries in Tasmania. The changes include amalgamations and major and minor boundary changes and involve an overall reduction in the number of LGAs from 46 to 29. The changes as they affect Statistical Divisions and Subdivisions are detailed below.

Statistical Divisions/Subdivisions
(Component areas from 1 July 1993)

Composition in terms of previous statistical regions and results of boundary changes in terms of changes in establishment counts

Greater Hobart (SD)

Brighton (M)
Clarence (C)
Glenorchy (C)
Hobart (C) - Inner
Hobart (C) - Remainder
Kingsborough (M) Pt. A
New Norfolk (M) Pt. A
Sorell (M) Pt. A

All of Brighton (M) Pt. A and part of Brighton (M) Pt. B
All of Clarence (C) and part of Richmond (M)
Minor boundary changes only
Unchanged
Minor boundary changes only
Minor boundary changes only
All of New Norfolk (M) Pt. A and a minor part of New Norfolk (M) Pt. B
All of Sorell (M) Pt. A and a minor part of Sorell (M) Pt. B
Result: The addition of two motels and guest houses and one caravan park.

Southern (SD)

Central Highlands (M)
Glamorgan/Spring Bay (M)
Huon Valley (M)
Kingsborough (M) Pt. B
New Norfolk (M) Pt. B
Sorell (M) Pt. B
Southern Midlands (M)
Tasman (M)

All of Bothwell (M) and the major part of Hamilton (M)
The major part of Glamorgan (M) and all of Spring Bay (M)
All of Esperance (M), Huon (M) and Port Cygnet (M)
All of Bruny (M) and Kingsborough (M) Pt. B
The major part of New Norfolk (M) Pt. B and a minor part of Hamilton (M)
A major part of Sorell (M) Pt. B
Parts of Brighton (M) Pt. B and Richmond (M) and all of Green Ponds (M) and Oatlands (M)
All of Tasman (M) and a major part of Sorell (M) Pt. B
Result: The loss of two motels and guest houses and one caravan park.

Northern (SD)

Greater Launceston (SSD)
George Town (M) Pt. A
Launceston (C) - Inner
Launceston (C) Pt. B
Meander Valley (M) Pt. A
Northern Midlands (M) Pt. A
West Tamar (M) Pt. A

No change
No change
All of Launceston (C) Pt. B and minor parts of Evandale (M) Pt. A and Westbury (M) Pt. A
The major part of Westbury (M) Pt. A
The major part of Evandale (M) Pt. A and all of Longford (M) Pt. A
All of Beaconsfield (M) Pt. A
Result: The addition of one hotel.

Central North (SSD)

George Town (M) Pt. B
Launceston (C) Pt. C
Meander Valley (M) Pt. B
Northern Midlands (M) Pt. B
West Tamar (M) Pt. B

No change
The major part of Launceston (C) Pt. C
The major parts of Deloraine (M) and Westbury (M) Pt. B
All of Campbell Town (M), Evandale (M) Pt. B, Longford (M) Pt. B and Ross (M) and a minor part of Fingal (M)
The major part of Beaconsfield (M) Pt. B and a minor part of Westbury (M) Pt. B
Result: The loss of one hotel.

North Eastern (SSD)

Break O' Day (M)
Dorset (M)
Flinders (M)

The major part of Fingal (M), all of Portland (M) and a minor part of Glamorgan (M)
All of Ringarooma (M) and Scottsdale (M) and a minor part of Launceston (C) Pt. C
No change
Result: No change in accommodation establishment numbers.

Mersey-Lyell (SD)

Burnie-Devonport (SSD)
Burnie (C) Pt. A
Central Coast (M) Pt. A
Devonport (C)
Latrobe (M) Pt. A
Waratah/Wynyard (M) Pt. A

No change
All of Penguin (M) Pt. A and Ulverstone (M) Pt. A and a minor part of Devonport (C)
The major part of Devonport (C)
No change
All of Wynyard (M) Pt. A
Result: No change in accommodation establishment numbers.

North Western Rural (SSD)

Burnie (C) Pt. B
Central Coast (M) Pt. B
Circular Head (M)
Kentish (M)
King Island (M)
Latrobe (M) Pt. B
Waratah/Wynyard (M) Pt. B

No change
All of Penguin (M) Pt. B and Ulverstone (M) Pt. B
Minor boundary changes
Minor boundary changes
No change
All of Latrobe (M) Pt. B and minor parts of Beaconsfield (M) Pt. B, Deloraine (M) and Westbury (M) Pt. B
All of Waratah (M), the major part of Wynyard (M) Pt. B
Result: The addition of one hotel.

Lyell (SSD)

West Coast (M)

All of Lyell (M), Strahan (M) and Zeehan (M)
Result: The loss of one hotel.

EXPLANATORY NOTES

- *****
- INTRODUCTION** **1** This publication contains data for Tasmania from a quarterly survey of tourist accommodation establishments. The period covered by the latest survey is the 3 months ended 30 June 1994.
- SCOPE** **2** Tourist accommodation establishments currently included in the survey comprise two groups:
- Establishments which provide predominantly short-term accommodation (i.e. for periods of less than 2 months) to the general public. These include:
 - Hotels, motels and guest houses, with facilities* being hotels licensed to operate a public bar and motels, private hotels and guest houses all of which provide a bath (or shower) and toilet in most guest rooms and have breakfast available for guests.
 - NOTE: From December quarter 1993, hotel, motel and guest house establishments with fewer than five rooms have been formally excluded from the scope of this statistical collection. This change in scope resulted in the exclusion of 13 establishments which in the September quarter 1993 Survey aggregates for Tasmania represented 6.8 per cent of hotel, motel and guest house establishments but accounted for only 0.7 per cent or less of accommodation capacity, occupancy and takings respectively.
 - Holiday flats, units and houses* (excluding establishments predominantly operated on a time share basis) which are operated by owners or managers who have sole letting rights to at least five flats, units or houses or by real estate agents for short-term letting. They are mainly self-contained in terms of cooking, bath (or shower) and toilet facilities and do not have breakfast available for guests. Data for holiday flats, units and houses include short-term owner occupation as well as paying guest occupation.
 - Visitor hostels* which provide accommodation to visitors on a bed basis (rather than by the room). This category does not include establishments providing charity type accommodation (e.g. Salvation Army hostels) nor hotels, motels and guest houses without in-room facilities which provide accommodation on a per room basis.
 - *Caravan parks* which provide either predominantly short-term (i.e. for periods of less than 2 months) or predominantly long-term (i.e. for periods of 2 months or more) accommodation to the general public and which provide powered sites for caravans and toilet, shower and laundry facilities for guests.
- 3** Data collected and published for each type of establishment (other than holiday flats, units and houses) include both long-term and short-term guests at these establishments.
- 4** Establishments which provide more than one type of accommodation (e.g. a motel with attached caravan park) are treated as two or more separate establishments. However, self-contained units, flats, cabins, etc. attached to hotels, motels or to caravan parks are included in the capacity for those establishments and not treated as separate holiday flat, unit or house establishments.
- DEFINITIONS**
- 5** *Number of establishments.* For hotels, motels and guest houses, caravan parks and visitor hostels, the number of establishments within the scope of the survey which operated for any part of the survey period, or which closed temporarily for the quarter for seasonal reasons.
- 6** *Number of letting entities.* For holiday flats, units and houses, the number of owners, managers or real estate agents within the scope of the survey who operated for any part of the survey period.
- 7** Capacity in terms of *Guest rooms, Bed spaces, Holiday units or Caravan park sites, etc.* is the maximum number available to accommodate paying guests during the survey period. Capacity closed temporarily for seasonal reasons is included.
- 8** *Bed spaces.* Three-quarter beds are counted as one bed space; double beds as two bed spaces. Cots are excluded.
- 9** *Total caravan park capacity* comprises *On-site vans, Other powered sites, Unpowered sites and Cabins, etc.*
- *****

EXPLANATORY NOTES—continued

DEFINITIONS—continued

- 10 *Room nights available.* The number of guest rooms available multiplied by the number of days for which they were available during the survey period. Includes operating periods only for establishments closing (other than for seasonal reasons) or opening during the survey period.
- 11 *Occupancy in terms of Room nights, Unit nights or Site nights occupied* refers to the total number of nights each guest room, holiday unit or caravan park site, etc. was occupied during the survey period.
- NOTE: From September quarter 1992, caravan park sites, etc. permanently reserved for 2 months or more at the end of the survey period but only casually occupied by their tenants have been recorded continuously as *Site nights occupied* irrespective of whether the tenants of individual sites were in residence on any particular night. (See also paragraph 14 below). Previously, usage of these sites was recorded as *Site nights occupied* only when their tenants were in the park. Total site occupancy rates from September quarter 1992 are therefore not comparable with those from previous quarters.
- 12 *Occupancy in terms of Guest nights* refers to the total number of nights each paying guest stayed during the survey period.
- 13 *Sites occupied by long-term guests.* The total number of sites, etc. occupied at the end of the survey period by guests who have stayed continuously for 2 months or more.
- 14 *Other sites permanently reserved.* The total number of powered and unpowered sites, on-site vans and cabins, etc. continuously let for 2 months or more by the end of the survey period to tenants who occupy the sites only on a casual or sporadic basis. Separate data for this item are available only from September quarter 1992.
- 15 *Occupancy rates* represent occupancy expressed as a percentage of total capacity available during the survey period – e.g.
- $$\text{Room occupancy rate (\%)} \text{ for the period} = \frac{\text{Room nights occupied}}{(\text{Guest rooms}) \times (\text{No. of days in the period})} \times 100$$
- providing that, for establishments closing (other than for seasonal reasons) or opening during the period, the denominator of the above expression includes only operating periods.
- 16 *Guest arrivals.* The total number of paying guests counted only on the first night they stayed at the accommodation establishment.
- 17 *Unit lettings.* The total number of times a holiday flat, unit or house was occupied by a new tenant, counted only on the first night it was occupied by the new tenant.
- 18 *Average length of stay* is expressed in number of days and calculated:
- for hotels, motels and guest houses and for visitor hostels, by dividing *Guest nights* by *Guest arrivals* and
 - for holiday flats, units and houses, by dividing *Unit nights occupied* by *Unit lettings*.
- 19 *Takings from accommodation.* Revenue received from the provision of accommodation. Takings from meals are excluded. Takings from accommodation for each month generally represent the takings received during that month. Where payments are received in advance of, or after, the provision of accommodation to guests, the monthly figure for takings from accommodation may not necessarily bear a direct relationship to the number of guests accommodated during the month. Rental and storage fees paid to caravan parks for the keeping of private vans in parks are included in the takings of the month they are received.
- 20 *Star grading.* The grading of hotels and motels with facilities based on the classification system used by members of the Australian Automobile Association (AAA). The gradings are allocated according to a points system based on the amenities and facilities available to guests. Details of the grading scheme are contained in the RACV-RAASA members' publication *Accommodation Australia*, or the individual tour guides produced by members of the AAA. For the purpose of classifying establishments to a star

EXPLANATORY NOTES—*continued*

DEFINITIONS—*continued*

grading in this publication, 'half' star gradings are ignored (e.g. a two and a half star grading has been shown as two star).

21 *Employment.* The number of persons working at accommodation establishments at the end of the survey period (including working proprietors and those working on other than accommodation activities).

**AUSTRALIAN STANDARD
GEOGRAPHICAL
CLASSIFICATION**

22. Statistics presented in this publication have been classified according to the Australian Standard Geographical Classification (ASGC), Edition 2.3. This classification incorporates a number of hierarchic structures of geographic areas. The appropriate spatial units of the main structure of the ASGC used in this publication are:

Statistical Local Areas (SLAs), which are legal Local Government Areas or parts thereof, which serve as the smallest type of spatial unit considered appropriate for the presentation of statistics and which add, without gaps or overlaps, to;

Statistical Subdivisions (SSDs) which in turn represent another, higher hierarchic level and add, without gaps or overlaps, to;

Statistical Divisions (SDs) which in turn add, without gaps or overlaps, to;

Total Tasmania.

For more detailed information, refer to the ASGC (1216.0).

UNPUBLISHED STATISTICS

23 The ABS may make available on request certain unpublished tourist accommodation statistics. A charge may be made for this information.

RELATED PUBLICATIONS

24 Publications for Australia, and each State and Territory, are released by the respective offices of the ABS. Tourist accommodation statistics for past quarters are available on request.

25 Other ABS publications which may be of interest include:

Directory of Tourism Statistics, 1991 (1130.0) (irregular)

Overseas Arrivals and Departures, Australia (3401.0) (monthly)

Tourism Indicators Australia (8634.0) (quarterly)

Tourist Accommodation, Australia (8635.0) (quarterly)

26 Current publications produced by the ABS are listed in the *Catalogue of Publications and Products* (1101.0). The ABS also issues the *Publications Advice* (1105.0) on Tuesdays and Fridays which lists publications to be released in the next few days. Both the *Catalogue* and *Publications Advice* are available from any ABS office.

**SYMBOLS AND
OTHER USAGES**

n.a. not available

n.p. not available for publication but included in totals where applicable

r figure or series revised since previous issue

.. not applicable

— nil or rounded to zero

— break in continuity of the series (where drawn across a column between two consecutive figures)

27 Where figures have been rounded, discrepancies may occur between totals and the sums of the component items.

Rodney J. Caswell
Acting Deputy Commonwealth Statistician

© Commonwealth of Australia 1994



2863560006947

ISSN 0312-6900

Recommended retail price: \$25.00
